

# HIGH RESOLUTION VANDAL PROOF IP66 DAY & NIGHT IR DOME CAMERA



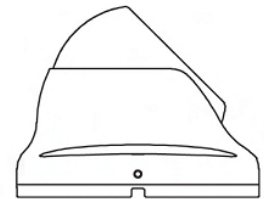
## VDIR24H

- 1/3" Sony Exview HAD CCD II ICX673AK Image Sensor
- Vivid Image Powered By Sony Effio-e DSP Chip Set
- Ultra High Resolution – 650 TVL (Color) /700 TVL (B/W)
- Vandal Proof & IP66 Weather Proof Aluminum Housing
- 24 Units of High Power IR LED, 20M IR Illumination
- 3.6mm Wide Angle IR Corrected Lens
- OSD, ATR, Digital WDR, Eclipse Function

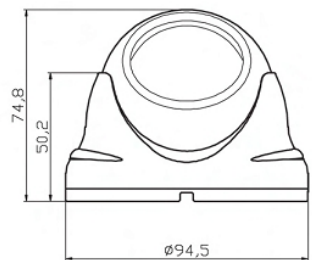
## TECHNICAL SPECIFICATIONS

IMAGE SENSOR	- 1/3" Sony Exview HAD CCD II ICX673AK
DSP CHIP SET	- Sony Effio-e
VIDEO RESOLUTION	- 650 TVL (Color) /700 TVL (B/W)
MINIMUM ILLUMINATION	- 0 Lux (IR On)
USABLE ILLUMINATION	- 0.001Lux/ F2.0
INFRARED DISTANCE	- Max. 20 Meters (Indoor)
INFRARED LED	- 24 Units
LENS	- 3.6mm IR Corrected Board Lens
PIXEL	- PAL:752(H)x582(V)
SYNC SYSTEM	- Internal
WHITE BALANCE	- Auto
GAIN CONTROL	- Auto
S/N RATIO	- $\geq 115$ dB (AGC OFF)C38
ELECTRONIC SHUTTER	- Auto:PAL 1/50-1/100,000 Sec
GAMMA COLLECTION	-0.45
VIDEO OUTPUT	- Composite Signal (1.0Vp-p, 75 $\Omega$ )
SCANNING SYSTEM	-PAL:625 Lines, 50 Field/Sec
OPERATION TEMPERATURE	- -10°C ~ +50°C RH95% Max
POWER SOURCE	- DC12V 150mA +-10%
DIMENSION	- $\phi$ 94 x 80(H) mm
WEIGHT	- 450g
CASING CONSTRUCTION	- Aluminum Die-cast
SPECIAL FEATURES	- OSD (On Screen Display ) ATR (Adaptive Tone Reproduction) DNR (Digital Noise Reduction) Privacy Mask Eclipse

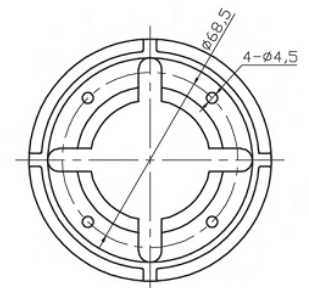
## DIMENSION



SIDE VIEW



FRONT VIEW



BOTTOM VIEW